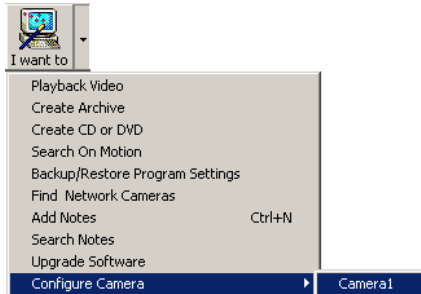


# Network (IP) Camera Configuration

Network (IP) cameras are normally configured based on the camera manufacturer's specifications. This is done through a "browser" interface. Some of the typical settings are user name, password, IP address and port number. Please read the manufacturers setup information. Window Vision has the ability to connect to the camera manufacturers configuration page through camera settings wizard "Link" button.

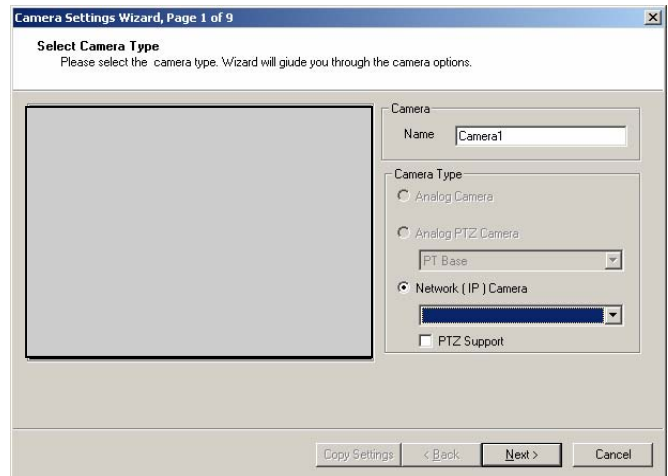
**step 1**



To enter the set up information for an IP Camera, Click on the 'I want to' button on the top toolbar. Select 'Configure Camera' and click on 'Camera1'. This will open the 'Camera Settings Wizard' which will guide you through the configuration process.

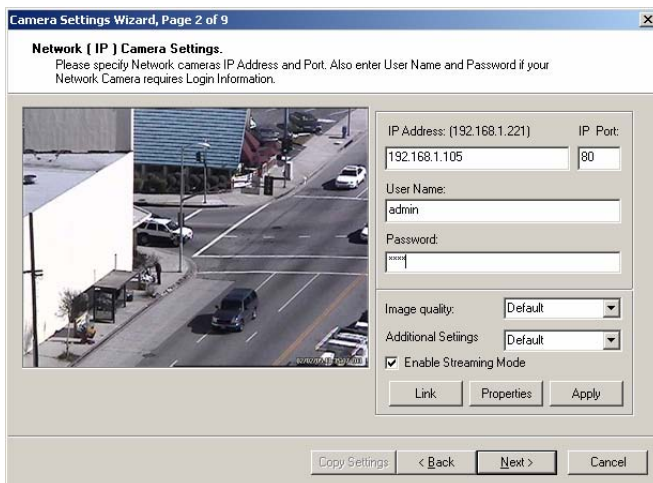
**step 2**

Enter the camera name and type on the first page. Select the brand of network camera being used from the 'Network (IP) Camera' drop down list. Check 'PTZ Support' if the network camera has pan-tilt-zoom capabilities.



Click 'Next' to continue setup

**step 3**



Enter the **IP address** and **IP Port** for the network camera. The Port is typically dependant on the cameras manufacturer. Enter the **User Name** and **Password** if your network camera requires login information and click 'Apply'.

The camera should now appear in the window at the left of the settings. If the camera does not appear click on the 'Link' button and make sure you can view the camera in manufacturer's configuration browser page.

Click 'Next' to continue setting up additional features like Brightness & Contrast, Recording options, Alarm options and Motion Detection. Complete the Camera settings on Page nine by clicking the 'Finish' button.

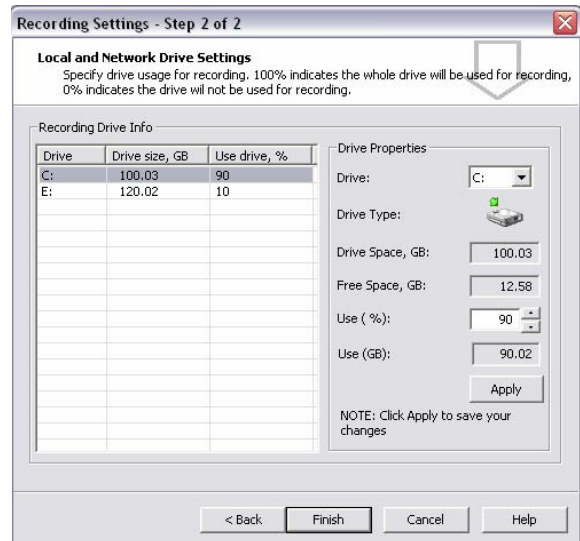
# Network (IP) Camera Configuration Additional Configuration

## Recording

When Window Vision is installed, the software detects the total hard drive space and uses 95 percent of the C drive for recording. All subsequent drives are set to 0% and not used by default. If other data is on the C drive, such as operating system, programs, etc. the resulting space for recording is reduced. It is important to use less than 100% of the C drive because windows requires and uses free space. Subsequent drives can be set to 100% usage.

To set up Recording parameters, select the **Setup** Button from the Main Toolbar and then select the **Recording Settings** option. Page one of the Wizard configures recording type and quality. Page two configures the percentage of which drives to record to. To use a hard drive for recording, set the desired percentage and press the Apply button. Mapped network drives may also be used for recording.

To start recording, select the **Record** Main Toolbar button.



## Remote Access

Enter a new system password.. This is the password used by the remote application to access this system. To change System Password, select the **Setup** Button from the Main Toolbar and then select the **Change System Password** option. Leave the Old Password Blank.

To change Remote Connection parameters, select the **Setup** Button from the Main Toolbar and then select the **Remote Access Settings** option.

Finally, to allow Remote access press the **Remote** Main Toolbar button. You will see "IP Connections Enabled" in the Status Window.



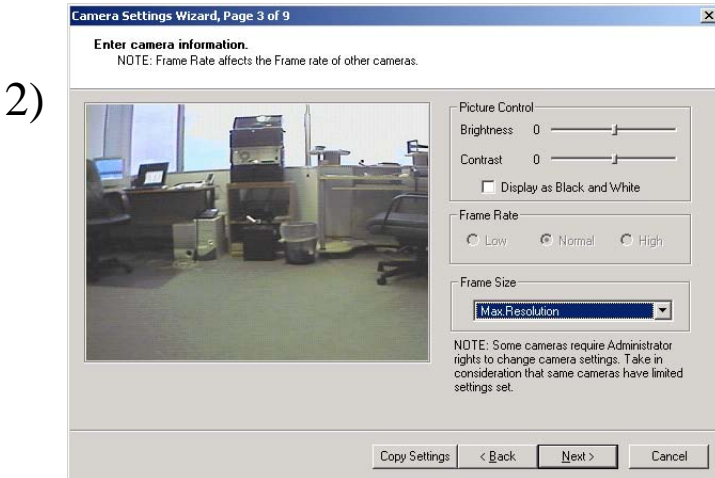
## "I Want To..." Toolbar Button

The major program features can be accessed using the **"I Want To..."** Main Toolbar button. Selecting an option from the resulting menu will open the appropriate wizard to guide you through all of the steps.

# Network (IP) Camera

## iPIX 360 degree Configuration

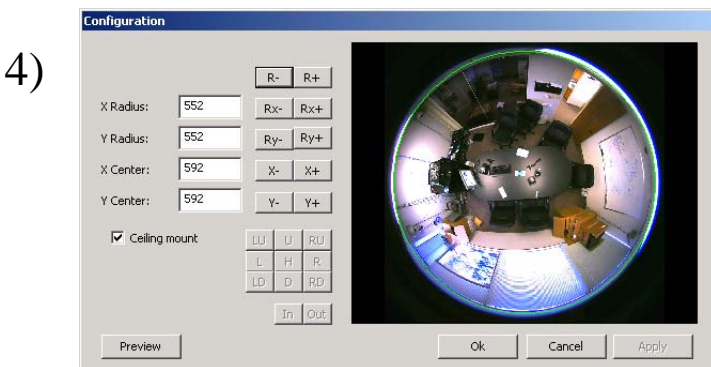
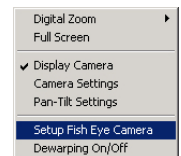
- 1) To set up the iPIX camera, follow the standard IP configuration instructions on page one. While on page two of the Camera Setup Wizard select the **Properties** Button and select **'Fish Eye Lens'**. Finish by pressing the "OK" button.



On Page three of the Camera Settings Wizard be sure to select **'Max Resolution'** from the **'Frame Size'** drop down selection box.

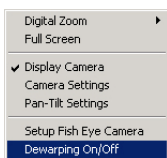
Click **'Next'** to continue setting up additional camera specific features. Complete the Camera settings on Page nine by clicking the **'Finish'** button.

- 3) Once the Camera Settings Wizard is complete there is additional configuration for the iPIX 360 degree camera. Right-Click on the iPIX camera to display the Right-Click Menu. Select **'Setup Fish Eye Camera'** to open the de-warping settings window.



Adjust the settings using the configuration window so that the green circle is at the perimeter of the camera as shown on the example picture. The camera view that is inside of the perimeter circle will be available for viewing. Use the preview button to toggle on/off preview mode. Select **'Ceiling mount'** if the iPIX camera has been mounted on the ceiling. Press the **'OK'** to complete the de-warping configuration.

- 5)
- De-warping changes the fish eye effect to a standard aspect ratio display and enables digital PTZ control. To turn on De-warping right click the small camera and click **'De-warping On/Off'**



The adjustment buttons work as follows:

- R+ and R- make the circle bigger/smaller
- Rx+ and Rx- make the circle wider/narrow
- Ry+ and Ry- make the circle taller/shorter
- X+ and X- moves the circle to the left/right
- Y+ and Y- moves the circle up/down